

KEYNOTE LEGEND

- 1 SAW-CUT AND REMOVE APPROXIMATELY 200 LF EXISTING SIDEWALK, AND FOOT TYPE F CURB, WITHIN RIGHT OF WAY, RELOCATED OR TO REMAIN
- 2 REFER TO LANDSCAPE PLANS FOR TREES TO BE REMOVED, RELOCATED OR TO REMAIN
- 3 EXISTING ELECTRIC PANEL AND POLE TO REMAIN
- 4 EXISTING STORMWATER MANAGEMENT SYSTEM: STRUCTURES, ROOF DRAINERS, PIPES, ETC. TO BE REMOVED. CONTRACTOR SHALL COORDINATE SEQUENCING OF REMOVAL WITH EROSION CONTROL PLANS PRIOR TO COMMENCEMENT. CAP ANY EXISTING DRAINAGE PIPES AT PROPERTY LINE
- 5 EXISTING LIGHT FIXTURE TO BE REMOVED
- 6 EXISTING LIGHT FIXTURE TO REMAIN
- 7 EXISTING SANITARY SEWER MANHOLE TO REMAIN
- 8 EXISTING UTILITIES TO BE RELOCATED. RELOCATION SHALL BE COORDINATED WITH FDOT, AND POMPANO BEACH PUBLIC WORKS DEPT. PRIOR TO DEMOLITION
- 9 EXISTING FIRE HYDRANT TO BE REMOVED AND/OR RELOCATED
- 10 EXISTING FIRE HYDRANT TO REMAIN
- 11 EXISTING SIGN TO BE REMOVED
- 12 EXISTING PYLON SIGN TO REMAIN
- 13 EXISTING 40 MPH SPEED LIMIT SIGN (TO BE RELOCATED)
- 14 EXISTING 66 LF OF CONCRETE SIDEWALK TO BE REMOVED
- 15 EXISTING STORM PIPE TO BE REMOVED

GENERAL NOTES

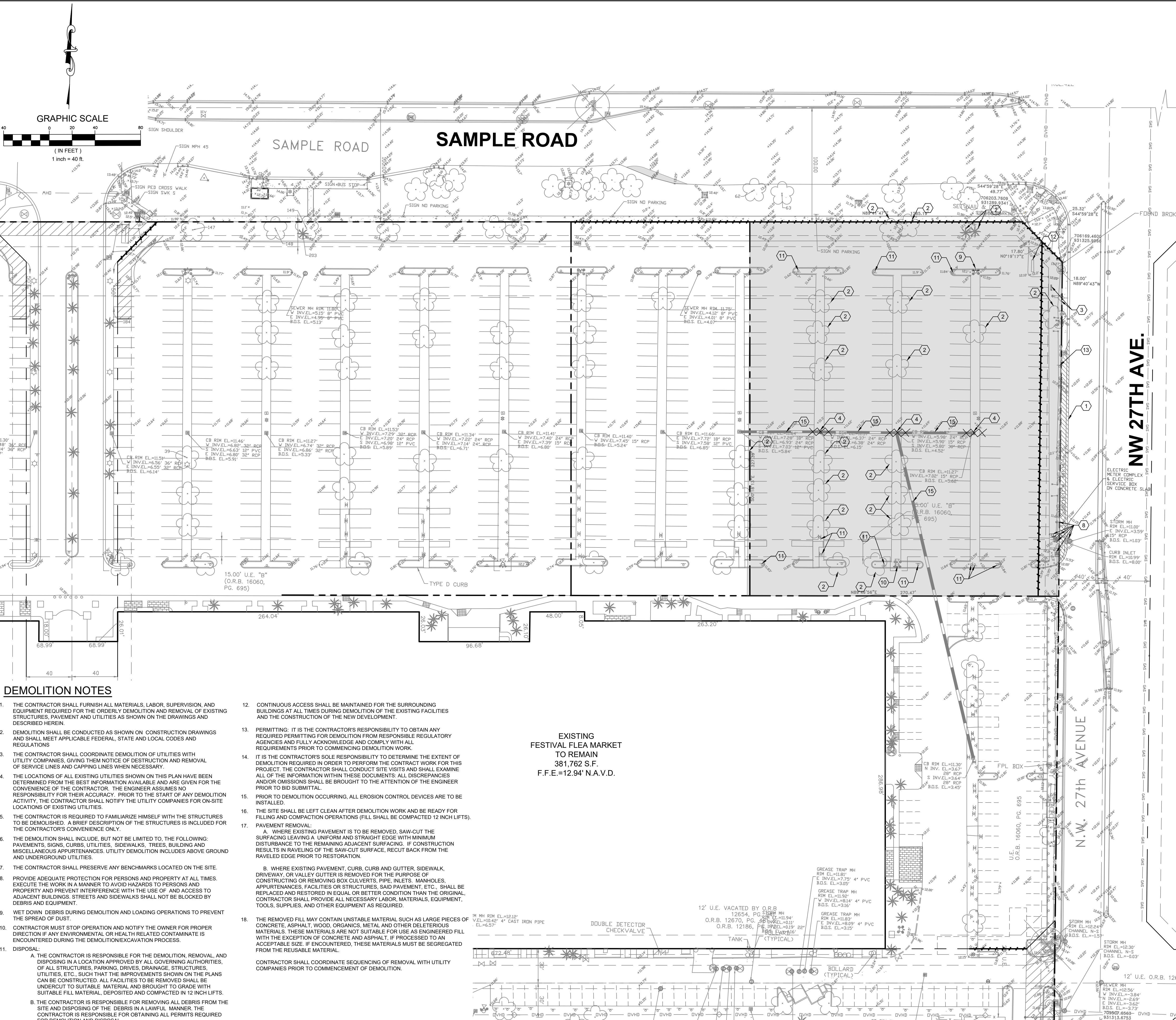
1. CONTRACTOR SHALL REFER TO THE ENVIRONMENTAL ASSESSMENT DONE FOR THE SITE PRIOR TO DEMOLITION.
2. REFER TO LANDSCAPE PLAN FOR TREE REMOVAL.
3. THE CONTRACTOR SHALL PREPARE THE SITE FOR FILLING AND COMPACTION OPERATIONS PER THE GEO-TECHNICAL REPORT.
4. PER THE BROWARD COUNTY PUBLIC WORKS DEPT.:
 - ALL BACKFILL SHALL BE DEPOSITED AND COMPACTED IN 12 INCH LIFTS.
 - UTILITIES TO BE ABANDON IN PLACE ARE REQUIRED TO BE CAPPED AND AND FILLED WITH FLOW-ABLE FILL. EXCAVATION TO BE BACKFILLED IN 12" COMPACTED LIFTS.
 - BACKFILLING OF UNDERGROUND REMOVALS (SUCH AS STORM DRAINAGE STRUCTURES/PIPE & UTILITY LINES) WILL REQUIRE BACKFILLING IN 12" COMPACTED LIFTS.

DEMOLITION LEGEND

- PROPERTY LINE
- LIMITS OF EXISTING ONSITE PAVEMENT, CURB AND SIDEWALK TO BE TO BE SAW CUT AND REMOVED DOWN TO NATURAL SOIL (UNLESS OTHERWISE NOTED)



CONTRACTOR TO VERIFY ALL UNDERGROUND STORMWATER CONNECTIONS PRIOR TO START OF DEMOLITION. PIPES TO BE REMOVED TO THE LIMIT OF DISTURBANCE. PIPES TO REMAIN IN PLACE BEYOND LIMITS OF DISTURBANCE AND PLUGGED WITH FLOWABLE FILL TO PREVENT LEAKAGE



DEMOLITION NOTES

1. THE CONTRACTOR SHALL FURNISH ALL MATERIALS, LABOR, SUPERVISION, AND EQUIPMENT REQUIRED FOR THE ORDERLY DEMOLITION AND REMOVAL OF EXISTING STRUCTURES, PAVEMENT AND UTILITIES AS SHOWN ON THE DRAWINGS AND DESCRIBED HEREIN.
2. DEMOLITION SHALL BE CONDUCTED AS SHOWN ON CONSTRUCTION DRAWINGS AND SHALL MEET APPLICABLE FEDERAL, STATE AND LOCAL CODES AND REGULATIONS
3. THE CONTRACTOR SHALL COORDINATE DEMOLITION OF UTILITIES WITH UTILITY COMPANIES, GIVING THEM NOTICE OF DESTRUCTION AND REMOVAL OF SERVICE LINES AND CAPPING LINES WHEN NECESSARY.
4. THE LOCATIONS OF ALL EXISTING UTILITIES SHOWN ON THIS PLAN HAVE BEEN DETERMINED FROM THE BEST INFORMATION AVAILABLE AND ARE GIVEN FOR THE CONVENIENCE OF THE CONTRACTOR. THE ENGINEER ASSUMES NO RESPONSIBILITY FOR THEIR ACCURACY. PRIOR TO THE START OF ANY DEMOLITION ACTIVITY, THE CONTRACTOR SHALL NOTIFY THE UTILITY COMPANIES FOR ON-SITE LOCATIONS OF EXISTING UTILITIES.
5. THE CONTRACTOR IS REQUIRED TO FAMILIARIZE HIMSELF WITH THE STRUCTURES TO BE DEMOLISHED. A BRIEF DESCRIPTION OF THE STRUCTURES IS INCLUDED FOR THE CONTRACTOR'S CONVENIENCE ONLY.
6. THE DEMOLITION SHALL INCLUDE, BUT NOT BE LIMITED TO, THE FOLLOWING: PAVEMENTS, SIGNS, CURBS, UTILITIES, SIDEWALKS, TREES, BUILDING AND MISCELLANEOUS APPURTENANCES. UTILITY DEMOLITION INCLUDES ABOVE GROUND AND UNDERGROUND UTILITIES.
7. THE CONTRACTOR SHALL PRESERVE ANY BENCHMARKS LOCATED ON THE SITE.
8. PROVIDE ADEQUATE PROTECTION FOR PERSONS AND PROPERTY AT ALL TIMES. EXECUTE THE WORK IN A MANNER TO AVOID HAZARDS TO PERSONS AND PROPERTY AND PREVENT INTERFERENCE WITH THE USE OF, AND ACCESS TO ADJACENT BUILDINGS, STREETS AND SIDEWALKS SHALL NOT BE BLOCKED BY DEBRIS AND EQUIPMENT.
9. WET DOWN DEBRIS DURING DEMOLITION AND LOADING OPERATIONS TO PREVENT THE SPREAD OF DUST.
10. CONTRACTOR MUST STOP OPERATION AND NOTIFY THE OWNER FOR PROPER DIRECTION IF ANY ENVIRONMENTAL OR HEALTH RELATED CONTAMINANTS IS ENCOUNTERED DURING THE DEMOLITION/EXCAVATION PROCESS.
11. DISPOSAL:
 - A. THE CONTRACTOR IS RESPONSIBLE FOR THE DEMOLITION, REMOVAL, AND DISPOSING IN A LOCATION APPROVED BY ALL GOVERNING AUTHORITIES, OF ALL STRUCTURES, PARKING DRIVES, DRAINAGE, STRUCTURES, UTILITIES, ETC., SUCH THAT THE IMPROVEMENTS SHOWN ON THE PLANS CAN BE CONSTRUCTED. ALL FACILITIES TO BE REMOVED SHALL BE UNDERCUT TO SUITABLE MATERIAL AND BROUGHT TO GRADE WITH SUITABLE FILL MATERIAL, DEPOSITED AND COMPACTED IN 12 INCH LIFTS.
 - B. THE CONTRACTOR IS RESPONSIBLE FOR REMOVING ALL DEBRIS FROM THE SITE AND DISPOSING OF THE DEBRIS IN A LAWFUL MANNER. THE CONTRACTOR IS RESPONSIBLE FOR OBTAINING ALL PERMITS REQUIRED FOR DEMOLITION AND DISPOSAL.
12. CONTINUOUS ACCESS SHALL BE MAINTAINED FOR THE SURROUNDING BUILDINGS AT ALL TIMES DURING DEMOLITION OF THE EXISTING FACILITIES AND THE CONSTRUCTION OF THE NEW DEVELOPMENT.
13. PERMITTING: IT IS THE CONTRACTOR'S RESPONSIBILITY TO OBTAIN ANY REQUIRED PERMITTING FOR DEMOLITION FROM RESPONSIBLE REGULATORY AGENCIES AND FULLY ACKNOWLEDGE AND COMPLY WITH ALL REQUIREMENTS PRIOR TO COMMENCING DEMOLITION WORK.
14. IT IS THE CONTRACTOR'S SOLE RESPONSIBILITY TO DETERMINE THE EXTENT OF DEMOLITION REQUIRED IN ORDER TO PERFORM THE CONTRACT WORK FOR THIS PROJECT. THE CONTRACTOR SHALL CONDUCT SITE VISITS AND SHALL EXAMINE ALL OF THE INFORMATION WITHIN THESE DOCUMENTS: ALL DISCREPANCIES AND/OR OMISSIONS SHALL BE BROUGHT TO THE ATTENTION OF THE ENGINEER PRIOR TO BID SUBMITTAL.
15. PRIOR TO DEMOLITION OCCURRING, ALL EROSION CONTROL DEVICES ARE TO BE INSTALLED.
16. THE SITE SHALL BE LEFT CLEAN AFTER DEMOLITION WORK AND BE READY FOR FILLING AND COMPACTION OPERATIONS (FILL SHALL BE COMPACTED 12 INCH LIFTS).
17. PAVEMENT REMOVAL:
 - A. WHERE EXISTING PAVEMENT IS TO BE REMOVED, SAW-CUT THE SURFACING LEAVING A UNIFORM AND STRAIGHT EDGE WITH MINIMUM DISTURBANCE TO THE REMAINING ADJACENT SURFACING. IF CONSTRUCTION RESULTS IN RAVELING OF THE SAW-CUT SURFACE, RE-CUT BACK FROM THE RAVELED EDGE PRIOR TO RESTORATION.
 - B. WHERE EXISTING PAVEMENT, CURB, CURB AND GUTTER, SIDEWALK, DRIVEWAY, OR VALLEY GUTTER IS REMOVED FOR THE PURPOSE OF CONSTRUCTING OR REMOVING BOX CULVERTS, PIPE, INLETS, MANHOLES, APPURTENANCES, FACILITIES OR STRUCTURES, SAID PAVEMENT, ETC., SHALL BE REPLACED AND RESTORED IN EQUAL OR BETTER CONDITION THAN THE ORIGINAL. CONTRACTOR SHALL PROVIDE ALL NECESSARY LABOR, MATERIALS, EQUIPMENT, TOOLS, SUPPLIES, AND OTHER EQUIPMENT AS REQUIRED.
18. THE REMOVED FILL MAY CONTAIN UNSTABLE MATERIAL SUCH AS LARGE PIECES OF CONCRETE, ASPHALT, WOOD, ORGANICS, METAL AND OTHER DELETERIOUS MATERIALS. THESE MATERIALS ARE NOT SUITABLE FOR USE AS ENGINEERED FILL WITH THE EXCEPTION OF CONCRETE AND ASPHALT, IF PROCESSED TO AN ACCEPTABLE SIZE. IF ENCOUNTERED, THESE MATERIALS MUST BE SEGREGATED FROM THE REUSABLE MATERIAL.

EXISTING
FESTIVAL FLEA MARKET
TO REMAIN
381,762 S.F.
F.F.E.=12.94' N.A.V.D.

